

Community Update: October 2019

WHO TO CONTACT



Site Manager

Henry Brooks

07957 176518

blossomstreet@cantillon.co.uk

Project Manager

Malcolm Bredenkamp

blossomstreet@cantillon.co.uk

Out of Hours Security

Omni Security

0800 9178971

Cantillon Head Office

01923 255 256

Considerate Constructors

Scheme

0800 783 1423



Dear Neighbours

We would like to take this opportunity to update you on the overall progress of our works on the Blossom Street Development which we are undertaking on behalf of British Land.

We are pleased to report that works continue to progress well.

Update on Current Works

Please see below an update on the works so far, as well as the planned works for the coming month:

Blossom Street:

- 17 Blossom Street has been demolished to ground floor level and a new site access has been formed.
- At 14-15 Blossom Street, archaeological works are taking place prior to subsequent piling works

Shoreditch High Street:

- The basement slab and foundations have been demolished to allow archaeology works to occur.
- Subsequently, the archaeologists will now working in the footprint of 20 Norton Folgate & 2 Shoreditch High Street through to the end of October 2019.

Norton Folgate / Folgate Street:

- The 13-15 Norton Folgate superstructure has been demolished and temporary steelwork has been installed to retain 15-16 Norton Folgate's facade.
- Scaffold is being erected around 16 Norton Folgate.

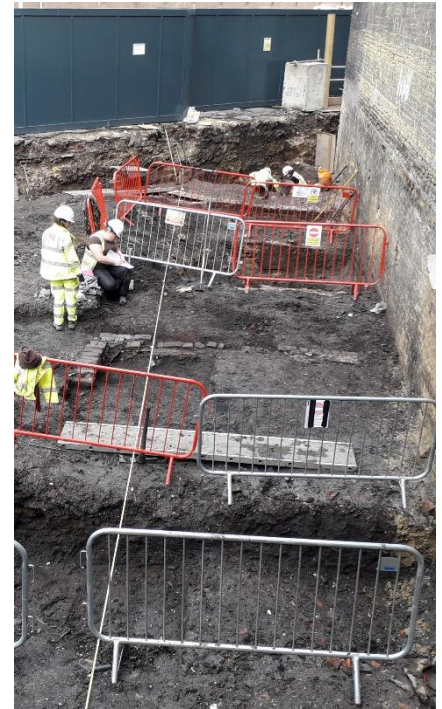


Commercial Street:

- The bus stop on the Commercial Street bridge will be suspended from 14 October 2019.
- The lamp post on the corner of Elder and Commercial Street will be removed by the Council during the week commencing 7 October 2019.
- A hoarding will then be erected, followed by the installation of a facade support frame to 161 Commercial Street.

Movement & Environmental Consideration

- We are monitoring noise, dust and vibration, as well as undertaking movement monitoring of the surrounding buildings and roads. We will continue to review that appropriate measures are in place to reduce the environmental impact on neighbours and the general public.
- Existing materials, removed from the buildings, will be recycled and diverted from landfill where possible; we aim to achieve a target of 95% for this. In cooperation with the Considerate Constructors Scheme ethos and community spirit, the site team continue to clean the roads surrounding the site of general rubbish.



Archaeological Works in Progress

Traffic Management

Vehicular access to site is via Shoreditch High Street, Fleur De Lis Street and Blossom Street, where loading areas are secured by our hoarding. We have Traffic Marshalls on each site entrance to manage deliveries and haulage operations. We continue to work with the London Borough of Tower Hamlets with the aim of reducing our impact on the surrounding area. A delivery schedule is in place for all our site suppliers adhere to.

The Site Team

Should you have any queries or concerns at any time, please feel free to contact our Site Team on the details noted on this newsletter or visit our Site Offices located at 14-20 Elder Street.

A further update will be issued next month providing information on progress and any other matters that may affect you during the works.

Construction Update Meetings

Thank you to everyone who attended last month's Community Update Meeting. We discussed a number of matters, including:

- Site works and progress.
- Out of hours delivery of heavy machinery.
- Suspension of the bus stop on Commercial Street, which is now confirmed from 14 October 2019
- Planned activities over the next month.

Next meeting: Thursday 31 October
6.15 pm at Loom Court, E1 6PL

We will be updating you on project progress, and will be happy to discuss any questions you may have.



SCAN ME

Site Working Hours

General site working hours:
08:00 – 18:00 Monday to Friday
08:00 – 13:00 Saturday